

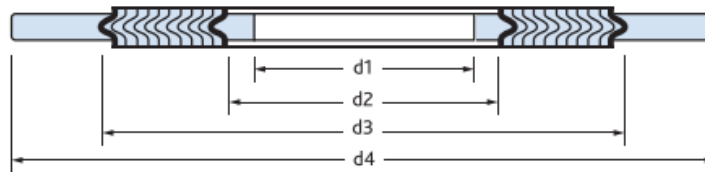


# GASKET & SEALING TECHNOLOGIES PVT. LTD.

A Complete Solution to your Gasket and Sealing Applications.

## Dimensional Data :

Spiral Wound Gaskets ASME B16.20 (for RF flanges B16.47 Series A) | **Class 150**



NPS	Inner Ring	Sealing Element		Outer Ring
	Inside Dia (d1)	Inside Dia (d2)	Outside Dia (d3)	Outside Dia (d4)
26	654.1	673.1	704.9	774.7
28	704.9	723.9	755.7	831.9
30	755.7	774.7	806.5	882.7
32	806.5	825.5	860.6	939.8
34	857.3	876.3	911.4	990.6
36	908.1	927.1	968.5	1047.8
38	958.9	977.9	1019.3	1111.3
40	1009.7	1028.7	1070.1	1162.1
42	1060.5	1079.5	1124	1219.2
44	1111.3	1130.3	1178.1	1276.4
46	1162.1	1181.1	1228.9	1327.2
48	1212.9	1231.9	1279.7	1384.3
50	1263.7	1282.7	1333.5	1435.1
52	1314.5	1333.5	1384.3	1492.3
54	1358.9	1384.3	1435.1	1549.4
56	1409.7	1435.1	1485.9	1606.6
58	1460.5	1485.9	1536.7	1663.7
60	1511.3	1536.7	1587.5	1714.5

**NOTES:**

- All dimensions are in millimeters
- Spiral Wound gasket with Inner - and Outer ring
- d1 = Inside diameter Inner ring.
- d2 = Inside diameter sealing element when no Inner ring is used.
- d3 = Outside diameter of sealing element.
- d4 = Outside diameter of Outer ring.

- Thickness of inner and outer ring: 2.97 mm - 3.33 mm.
- Thickness sealing element: 4.45 mm.
- Tolerance Outside diameter for NPS 1/2 through NPS 8 is ± 0.8 mm; for NPS 10 through NPS 24 tolerance is + 1.5 mm - 0.8 mm.
- There are no class 400 flanges NPS 1/2 thru NPS 3 (use Class 600), class 900 flanges NPS 1/2 thru NPS 2½ (use Class 1500), or class 2500 flanges NPS 14 or larger.

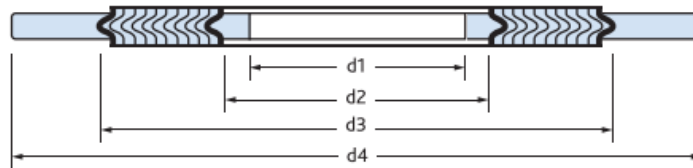


# GASKET & SEALING TECHNOLOGIES PVT. LTD.

A Complete Solution to your Gasket and Sealing Applications.

## Dimensional Data :

### Spiral Wound Gaskets ASME B16.20 (for RF flanges B16.47 Series B) | Class 150



NPS	Inner Ring	Sealing Element		Outer Ring
	Inside Dia (d1)	Inside Dia (d2)	Outside Dia (d3)	Outside Dia (d4)
26	654.1	673.1	698.5	725.4
28	704.9	723.9	749.3	776.2
30	755.7	774.7	800.1	827
32	806.5	825.5	850.9	881.1
34	857.3	876.3	908.1	935
36	908.1	927.1	958.9	987.6
38	958.9	974.9	1009.7	1044.7
40	1009.7	1022.4	1063.8	1095.5
42	1060.5	1079.5	1114.6	1146.3
44	1111.3	1124	1165.4	1197.1
46	1162.1	1181.1	1224	1255.8
48	1212.9	1231.9	1270	1306.6
50	1263.7	1282.7	1325.6	1357.4
52	1314.5	1333.5	1376.4	1408.2
54	1365.3	1384.3	1422.4	1463.8
56	1422.4	1444.8	1478	1514.6
58	1478	1500.1	1528.8	1579.6
60	1535.2	1557.3	1586	1630.4

#### NOTES:

- All dimensions are in millimeters
- Spiral Wound gasket with Inner - and Outer ring
- d1 = Inside diameter Inner ring.
- d2 = Inside diameter sealing element when no Inner ring is used.
- d3 = Outside diameter of sealing element.
- d4 = Outside diameter of Outer ring.

- Thickness of inner and outer ring: 2.97 mm - 3.33 mm.
- Thickness sealing element: 4.45 mm.
- Tolerance Outside diameter for NPS 1/2 through NPS 8 is  $\pm 0.8$  mm; for NPS 10 through NPS 24 tolerance is  $+1.5$  mm - 0.8 mm.
- There are no class 400 flanges NPS 1/2 thru NPS 3 (use Class 600), class 900 flanges NPS 1/2 thru NPS 2 1/2 (use Class 1500), or class 2500 flanges NPS 14 or larger.

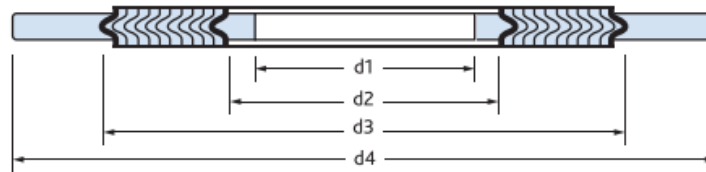


# GASKET & SEALING TECHNOLOGIES PVT. LTD.

A Complete Solution to your Gasket and Sealing Applications.

## Dimensional Data :

Spiral Wound Gaskets ASME B16.20 (for RF flanges B16.47 Series A) | Class 300



NPS	Inner Ring	Sealing Element		Outer Ring
	Inside Dia (d1)	Inside Dia (d2)	Outside Dia (d3)	Outside Dia (d4)
26	654.1	685.8	736.6	835.2
28	704.9	736.6	787.4	898.7
30	755.7	793.8	844.6	952.5
32	806.5	850.9	901.7	1006.6
34	857.3	901.7	952.5	1057.4
36	908.1	955.8	1006.6	1117.6
38	952.5	977.9	1016	1054.1
40	1003.3	1022.4	1070.1	1114.6
42	1054.1	1073.2	1120.9	1165.4
44	1104.9	1130.3	1181.1	1219.2
46	1152.7	1178.1	1228.9	1273.3
48	1209.8	1235.2	1286	1324.1
50	1244.6	1295.4	1346.2	1378
52	1320.8	1346.2	1397	1428.8
54	1352.6	1403.4	1454.2	1492.3
56	1403.4	1454.2	1505	1543.1
58	1447.8	1511.3	1562.1	1593.9
60	1524	1562.1	1612.9	1644.7

### NOTES:

- All dimensions are in millimeters
- Spiral Wound gasket with Inner - and Outer ring
- d1 = Inside diameter Inner ring.
- d2 = Inside diameter sealing element when no Inner ring is used.
- d3 = Outside diameter of sealing element.
- d4 = Outside diameter of Outer ring.

- Thickness of inner and outer ring: 2.97 mm - 3.33 mm.
- Thickness sealing element: 4.45 mm.
- Tolerance Outside diameter for NPS 1/2 through NPS 8 is  $\pm 0.8$  mm; for NPS 10 through NPS 24 tolerance is  $+ 1.5$  mm - 0.8 mm.
- There are no class 400 flanges NPS 1/2 thru NPS 3 (use Class 600), class 900 flanges NPS 1/2 thru NPS 2½ (use Class 1500), or class 2500 flanges NPS 14 or larger.

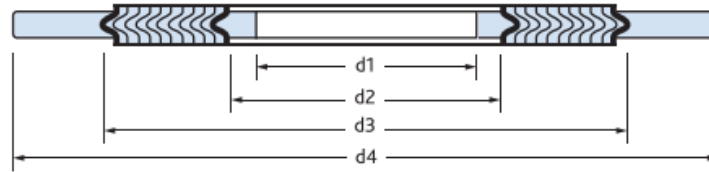


# GASKET & SEALING TECHNOLOGIES PVT. LTD.

A Complete Solution to your Gasket and Sealing Applications.

## Dimensional Data :

### Spiral Wound Gaskets ASME B16.20 (for RF flanges B16.47 Series B) | Class 300



NPS	Inner Ring	Sealing Element		Outer Ring
	Inside Dia (d1)	Inside Dia (d2)	Outside Dia (d3)	Outside Dia (d4)
26	654.1	673.1	711.2	771.7
28	704.9	723.9	762	825.5
30	755.7	774.7	812.8	886
32	806.5	825.5	863.6	939.8
34	857.3	876.3	914.4	993.9
36	908.1	927.1	965.2	1047.8
38	971.6	1009.7	1047.8	1098.6
40	1022.4	1060.5	1098.6	1149.4
42	1085.9	1111.3	1149.4	1200.2
44	1124	1162.1	1200.2	1251
46	1178.1	1216.2	1254.3	1317.8
48	1231.9	1263.7	1311.4	1368.6
50	1267	1317.8	1355.9	1419.4
52	1317.8	1368.6	1406.9	1470.2
54	1365.3	1403.4	1454.2	1530.4
56	1428.8	1479.6	1524	1593.9
58	1484.4	1535.2	1573.3	1655.8
60	1557.3	1589	1630.4	1706.6

#### NOTES:

- All dimensions are in millimeters
- Spiral Wound gasket with Inner - and Outer ring
- d1 = Inside diameter Inner ring.
- d2 = Inside diameter sealing element when no Inner ring is used.
- d3 = Outside diameter of sealing element.
- d4 = Outside diameter of Outer ring.
- Thickness of inner and outer ring: 2.97 mm - 3.33 mm.
- Thickness sealing element: 4.45 mm.
- Tolerance Outside diameter for NPS 1/2 through NPS 8 is  $\pm 0.8$  mm; for NPS 10 through NPS 24 tolerance is  $+ 1.5$  mm - 0.8 mm.
- There are no class 400 flanges NPS 1/2 thru NPS 3 (use Class 600), class 900 flanges NPS 1/2 thru NPS 2 1/2 (use Class 1500), or class 2500 flanges NPS 14 or larger.

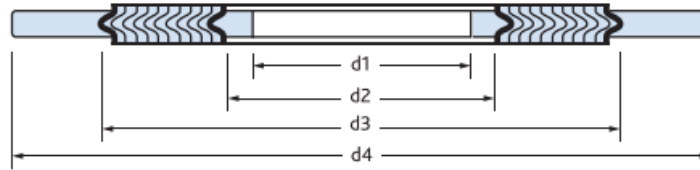


# GASKET & SEALING TECHNOLOGIES PVT. LTD.

A Complete Solution to your Gasket and Sealing Applications.

## Dimensional Data :

Spiral Wound Gaskets ASME B16.20 (for RF flanges B16.47 Series A) | **Class 600**



NPS	Inner Ring	Sealing Element		Outer Ring
	Inside Dia (d1)	Inside Dia (d2)	Outside Dia (d3)	Outside Dia (d4)
26	647.7	685.8	736.6	866.9
28	698.5	736.6	787.4	914.4
30	755.7	793.8	844.6	971.6
32	812.8	850.9	901.7	1022.4
34	863.6	901.7	952.5	1073.2
36	917.7	955.8	1006.6	1130.3
38	952.5	990.6	1041.4	1104.9
40	1009.7	1047.8	1098.6	1155.7
42	1066.8	1104.9	1155.7	1219.2
44	1111.3	1162.1	1212.9	1270
46	1162.1	1212.9	1263.7	1327.2
48	1219.2	1270	1320.8	1390.7
50	1270	1320.8	1371.6	1447.8
52	1320.8	1371.6	1422.4	1498.6
54	1378	1428.8	1479.6	1555.8
56	1428.8	1479.6	1530.4	1612.9
58	1473.2	1536.7	1587.5	1663.7
60	1530.4	1593.9	1644.7	1733.6

**NOTES:**

- All dimensions are in millimeters
- Spiral Wound gasket with Inner - and Outer ring
- d1 = Inside diameter Inner ring.
- d2 = Inside diameter sealing element when no Inner ring is used.
- d3 = Outside diameter of sealing element.
- d4 = Outside diameter of Outer ring.
- Thickness of inner and outer ring: 2.97 mm - 3.33 mm.
- Thickness sealing element: 4.45 mm.
- Tolerance Outside diameter for NPS 1/2 through NPS 8 is  $\pm 0.8$  mm; for NPS 10 through NPS 24 tolerance is  $+ 1.5$  mm - 0.8 mm.
- There are no class 400 flanges NPS 1/2 thru NPS 3 (use Class 600), class 900 flanges NPS 1/2 thru NPS 2 1/2 (use Class 1500), or class 2500 flanges NPS 14 or larger.

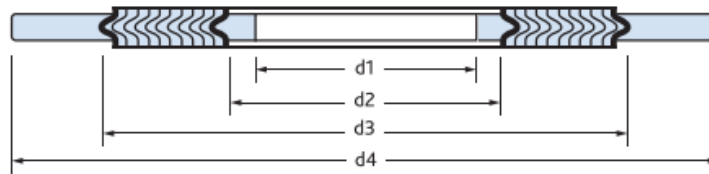


# GASKET & SEALING TECHNOLOGIES PVT. LTD.

A Complete Solution to your Gasket and Sealing Applications.

## Dimensional Data :

### Spiral Wound Gaskets ASME B16.20 (for RF flanges B16.47 Series B) | Class 600



NPS	Inner Ring	Sealing Element		Outer Ring
	Inside Dia (d1)	Inside Dia (d2)	Outside Dia (d3)	Outside Dia (d4)
26	644.7	663.7	714.5	765.3
28	685.8	704.9	755.7	819.2
30	752.6	778	828.8	879.6
32	793.8	831.9	882.7	933.5
34	850.9	889	939.8	997
36	901.7	939.8	990.6	1047.8
38	952.5	990.6	1041.4	1104.9
40	1009.7	1047.8	1098.6	1155.7
42	1066.8	1104.9	1155.7	1219.2
44	1111.3	1162.1	1212.9	1270
46	1162.1	1212.9	1263.7	1327.2
48	1219.2	1270	1320.8	1390.7
50	1270	1320.8	1371.6	1447.8
52	1320.8	1371.6	1422.4	1498.6
54	1378	1428.8	1479.6	1555.8
56	1428.8	1479.6	1530.4	1612.9
58	1473.2	1536.7	1587.5	1663.7
60	1530.4	1593.9	1644.7	1733.6

#### NOTES:

- All dimensions are in millimeters
- Spiral Wound gasket with Inner - and Outer ring
- d1 = Inside diameter Inner ring.
- d2 = Inside diameter sealing element when no Inner ring is used.
- d3 = Outside diameter of sealing element.
- d4 = Outside diameter of Outer ring.

- Thickness of inner and outer ring: 2.97 mm - 3.33 mm.
- Thickness sealing element: 4.45 mm.
- Tolerance Outside diameter for NPS 1/2 through NPS 8 is  $\pm 0.8$  mm; for NPS 10 through NPS 24 tolerance is  $+ 1.5$  mm - 0.8 mm.
- There are no class 400 flanges NPS 1/2 thru NPS 3 (use Class 600), class 900 flanges NPS 1/2 thru NPS 2 1/2 (use Class 1500), or class 2500 flanges NPS 14 or larger.

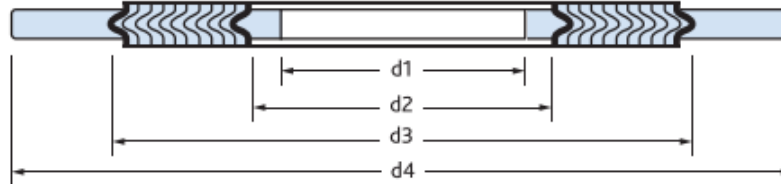


# GASKET & SEALING TECHNOLOGIES PVT. LTD.

A Complete Solution to your Gasket and Sealing Applications.

## Dimensional Data :

### Spiral Wound Gaskets ASME B16.20 (for RF flanges B16.47 Series A) | Class 900



NPS	Inner Ring	Sealing Element		Outer Ring
	Inside Dia (d1)	Inside Dia (d2)	Outside Dia (d3)	Outside Dia (d4)
26	660.4	685.8	736.6	882.7
28	711.2	736.6	787.4	946.2
30	768.4	793.8	844.6	1009.7
32	812.8	850.9	901.7	1073.2
34	863.6	901.7	952.5	1136.7
36	920.8	958.9	1009.7	1200.2
38	1009.7	1035.1	1085.9	1200.2
40	1060.5	1098.6	1149.4	1251
42	1111.3	1149.4	1200.2	1301.8
44	1155.7	1206.5	1257.3	1368.6
46	1219.2	1270	1320.8	1435.1
48	1270	1320.8	1371.6	1485.9

#### NOTES:

- All dimensions are in millimeters
- Spiral Wound gasket with Inner - and Outer ring
- d1 = Inside diameter Inner ring.
- d2 = Inside diameter sealing element when no Inner ring is used.
- d3 = Outside diameter of sealing element.
- d4 = Outside diameter of Outer ring.

- Thickness of inner and outer ring: 2.97 mm - 3.33 mm.
- Thickness sealing element: 4.45 mm.
- Tolerance Outside diameter for NPS 1/2 through NPS 8 is  $\pm 0.8$  mm; for NPS 10 through NPS 24 tolerance is  $+1.5$  mm - 0.8 mm.
- There are no class 400 flanges NPS 1/2 thru NPS 3 (use Class 600), class 900 flanges NPS 1/2 thru NPS 2 1/2 (use Class 1500), or class 2500 flanges NPS 14 or larger.

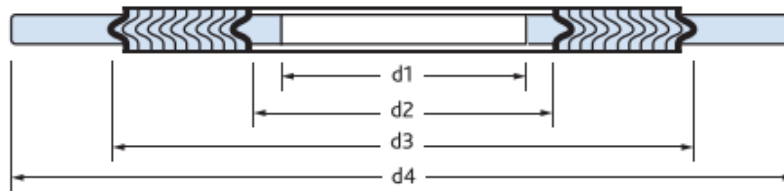


# GASKET & SEALING TECHNOLOGIES PVT. LTD.

A Complete Solution to your Gasket and Sealing Applications.

## Dimensional Data :

### Spiral Wound Gaskets ASME B16.20 (for RF flanges B16.47 Series B) | Class 900



NPS	Inner Ring	Sealing Element		Outer Ring
	Inside Dia (d1)	Inside Dia (d2)	Outside Dia (d3)	Outside Dia (d4)
26	666.8	692.2	749.3	838.2
28	717.6	743	800.1	901.7
30	781.1	806.5	857.3	958.9
32	838.2	863.6	914.4	1016
34	895.4	920.8	971.6	1073.2
36	920.8	946.2	997	1124
38	1009.7	1035.1	1085.9	1200.2
40	1060.5	1098.6	1149.4	1251
42	1111.3	1149.4	1200.2	1301.8
44	1155.7	1206.5	1257.3	1368.6
46	1219.2	1270	1320.8	1435.1
48	1270	1320.8	1371.6	1485.9

#### NOTES:

- All dimensions are in millimeters
- Spiral Wound gasket with Inner - and Outer ring
- d1 = Inside diameter Inner ring.
- d2 = Inside diameter sealing element when no Inner ring is used.
- d3 = Outside diameter of sealing element.
- d4 = Outside diameter of Outer ring.
- Thickness of inner and outer ring: 2.97 mm - 3.33 mm.
- Thickness sealing element: 4.45 mm.
- Tolerance Outside diameter for NPS 1/2 through NPS 8 is  $\pm 0.8$  mm; for NPS 10 through NPS 24 tolerance is  $+1.5$  mm - 0.8 mm.
- There are no class 400 flanges NPS 1/2 thru NPS 3 (use Class 600), class 900 flanges NPS 1/2 thru NPS 2 1/2 (use Class 1500), or class 2500 flanges NPS 14 or larger.